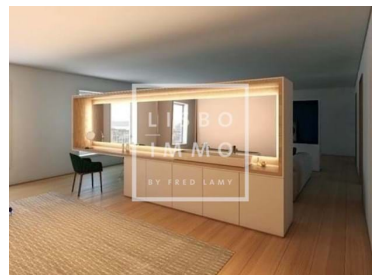
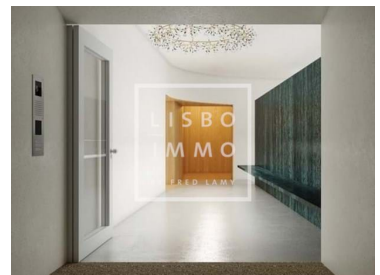




## Santa Maria Maior - Apartment



**7**  
Bedrooms

**7**  
Bathrooms

**916,4**  
Area (m<sup>2</sup>)

**421**  
Land Area (m<sup>2</sup>)

**Garage**

**Swimming Pool**

**3 500 000 €**  
(EUR €)

## LAND WITH PROJECT APPROVED DUPLEX 292M2 AND TRIPLEX 552M2, CASTLE, SANTA MARIA MAIOR

Land of 421m<sup>2</sup> with approved building permit. The project consists of 2 apartments, a duplex T3 of 292m<sup>2</sup> and a triplex T4 of 552m<sup>2</sup> with garden and swimming pool for a total of 965m<sup>2</sup> buildable. The two apartments with parking, have magnificent views of these exceptional properties with terrace in Lisbon.

Architecture offers vast and generous areas.

The duplex is located on the first two floors that communicate via the staircase and elevator. The lower floor corresponds to the living room and the upper floor corresponds to the private space. Triplex is organized on the top 3 floors. The lower floor corresponds to the bedroom floor, the floor following the master suite and the upper floor to the living room of the house, with a terrace of 68m<sup>2</sup>



**Frederick Lamy**

+351 927 55 45 45 <sup>2</sup> · +33 6 68 63 34 54

fred@lisboimmo.com

T +351 927 55 45 45 <sup>2</sup> · T +33 6 68 63 34 54 · E fred@lisboimmo.com

Rua 1 de Maio #150 LISBOA 1300-476 PORTUGAL  
AMI 16803

<sup>1</sup> (Call to national fixed network) | <sup>2</sup> (Call to national mobile network)



and another of 38m2, swimming pool of 24m2.

The castle of São Jorge, formerly known as Castel of the Moors, dominates the city from the seven highest hills of Lisbon.

The land, located at the foot of the castle, faces the centre of Lisbon and the Tagus River.

The building is located near tourist attraction areas, while at the same time being able to maintain confidentiality and tranquility.

We share with all real estate / professionals on a 50% / 50% basis.

**\*\*VISITS WITH PROTOCOL – PROPERTY INHABITED\*\***

As the property is not inhabited, the person responsible for the property is the only one who has the keys. Visits to the property are possible with restrictions and a protocol, a minimum distance of 2 meters between each person will be respected during the visit. Only one visit is possible per day, with a maximum of 2 people per client. Thank you for your understanding by respecting these conditions we put everything in force to respect the instructions set up by the Portuguese authorities.



**Frederick Lamy**

+351 927 55 45 45 <sup>2</sup> · +33 6 68 63 34 54

fred@lisboimmo.com

**T +351 927 55 45 45 <sup>2</sup> · T +33 6 68 63 34 54 · E fred@lisboimmo.com**

**Rua 1 de Maio #150 LISBOA 1300-476 PORTUGAL  
AMI 16803**

<sup>1</sup> (Call to national fixed network) | <sup>2</sup> (Call to national mobile network)



## Property Features

- Heating
- Under floor heating
- Built-in closets
- Social bathroom
- Pool
- Storage
- Built year: 2020
- Roof terrace
- Lift
- Energetic certification: In process
- Garage
- Modern
- To recover
- Duplex
- Penthouse
- Air conditioning
- Fireplace
- Double glazed
- Equipped kitchen
- Garden
- Balcony
- Private condominium
- Security alarm
- Central location
- Terrace
- Good condition
- New Construction
- Last floor
- Floor: 5



**Frederick Lamy**

+351 927 55 45 45 <sup>2</sup> · +33 6 68 63 34 54

fred@lisboimmo.com

T +351 927 55 45 45 <sup>2</sup> · T +33 6 68 63 34 54 · E fred@lisboimmo.com

Rua 1 de Maio #150 LISBOA 1300-476 PORTUGAL  
AMI 16803

<sup>1</sup> (Call to national fixed network) | <sup>2</sup> (Call to national mobile network)