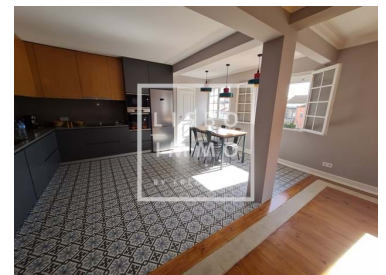
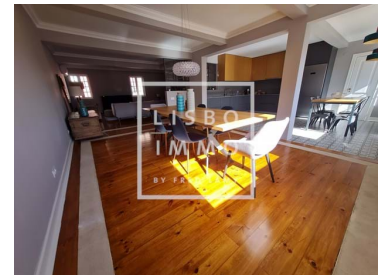




## Estrela - Apartment



**4**  
Bedrooms

**3**  
Bathrooms

**231**  
Area (m<sup>2</sup>)

**Garage**

**1 150 000 €**  
(EUR €)

### Duplex T4 231m2 renovated, view, parking, Estrela

Duplex of 231m2, 4 bedrooms, on the 2nd and last floor without elevator of a charming building, 100 meters from the basilica and the garden of estrela, in a very quiet street, with a clear view from both sides, the charm of the old, with a tasteful renovation.

This crossing apartment, with many windows, has been completely renovated recently, with noble and quality materials, to bring modern comfort in new volumes.

The "living space" occupies a prominent place on the first floor, you find a large living room with fireplace and a dining room open to the kitchen.

The tone is set, the priority is quality of life, the kitchen becomes the lung of the apartment.

The location of the fireplace allows you to radiate throughout the space, so you can make the most of it.

The rest of the floor consists of two large bedrooms, one with a balcony overlooking the Basilica of Estrela, and a full bathroom.



**Frederick Lamy**

+351 927 55 45 45 <sup>2</sup> · +33 6 68 63 34 54

fred@lisboimmo.com

T +351 927 55 45 45 <sup>2</sup> · T +33 6 68 63 34 54 · E fred@lisboimmo.com

Rua 1 de Maio #150 LISBOA 1300-476 PORTUGAL  
AMI 16803

<sup>1</sup> (Call to national fixed network) | <sup>2</sup> (Call to national mobile network)



At the entrance, a wooden staircase distributes the top of the duplex where the two suites are located.

The master suite, very bright with these large windows, offers plenty of storage and a large bathroom open to the bedroom. The second suite is no less pleasant.

A very bright apartment, where the wooden nuances are reflected with this original floor covering the entire apartment.

The access to the apartment, even on the second floor, poses no problem because the building is small and only 2 levels. It has been completely renovated recently.

In front of the building door, on the opposite sidewalk, are the 2 parking lots available with the apartment.

A few meters from the apartment is the Basilica of Estrela. It faces one of the parks that occupies a special place in the heart of lisboners, the Jardim da Estrela.

First fashionable for these greenhouses, these kiosks for a Chinese pavilion or for a caged lion that no longer exists, the garden continues to welcome residents of the neighborhood and further afield. It is a romantic garden, a landscape mix with flat lawns, wild corners more or less high, small lakes with carp and ducks, flower beds and cacti.

Of course there are also large and beautiful trees of various species that can classify the place as a botanical garden.

There is a beautiful music kiosk "Belle Epoque", the most important symbol of the garden, green wrought iron, where musicians play during the summer.

The garden has many statues.

Finally, it has a playground for children and a nice café, where it is not uncommon to make movies.

We arrived at the garden of Estrela to walk, practice yoga or play sports, daydream, draw, read, meet friends, play with children.

A place where life is good...

LISBOIMMO exclusivity

We share with all real estate professionals 50% / 50%.

**\*\*VISITS WITH PROTOCOL – PROPERTY INHABITED\*\***

As the property is not inhabited, the person responsible for the property is the only one who has the keys. Visits to the property are possible with restrictions and a protocol, a minimum distance of 2 meters between each person will be respected during the visit. Only one visit is possible per day, with a maximum of 2 people per client. Thank you for your understanding by respecting these conditions we put everything in force to respect the instructions set up by the Portuguese authorities.



**Frederick Lamy**

+351 927 55 45 45 <sup>2</sup> · +33 6 68 63 34 54

fred@lisboimmo.com

**T +351 927 55 45 45 <sup>2</sup> · T +33 6 68 63 34 54 · E fred@lisboimmo.com**

**Rua 1 de Maio #150 LISBOA 1300-476 PORTUGAL  
AMI 16803**

<sup>1</sup> (Call to national fixed network) | <sup>2</sup> (Call to national mobile network)



## Property Features

- Heating
- Fireplace
- Double glazed
- Suites: 2
- Equipped kitchen
- Balcony
- Private condominium
- Energetic certification: D
- Garage
- Renovated
- Duplex
- Penthouse
- Air conditioning
- Built-in closets
- Wooden floor
- Social bathroom
- Storage
- Built year: 2019
- Central location
- Terrace
- New Construction
- Last floor
- Floor: 2
- Partially furnished



**Frederick Lamy**

+351 927 55 45 45 <sup>2</sup> · +33 6 68 63 34 54

fred@lisboimmo.com

T +351 927 55 45 45 <sup>2</sup> · T +33 6 68 63 34 54 · E fred@lisboimmo.com

Rua 1 de Maio #150 LISBOA 1300-476 PORTUGAL  
AMI 16803

<sup>1</sup> (Call to national fixed network) | <sup>2</sup> (Call to national mobile network)